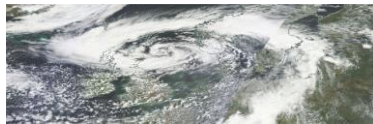


# Summary and Conclusions

## Research Unit *Operational Systems*

Extreme events: coastal impacts



Turbulence: important for understanding many shelf-sea processes

Submesoscale ecosystem drivers: strong physical-biological coupling



COSYNA  $\longleftrightarrow$  High-resolution and mobile observations

1

# On-site Visit

Research Unit *Operational Systems* invites you to visit:

- The COSYNA Showroom (Building 11)
- Exhibition on instrument development and scientific applications (Building 34)
  - COSYNA
  - Submesoscale Processes
  - Turbulence

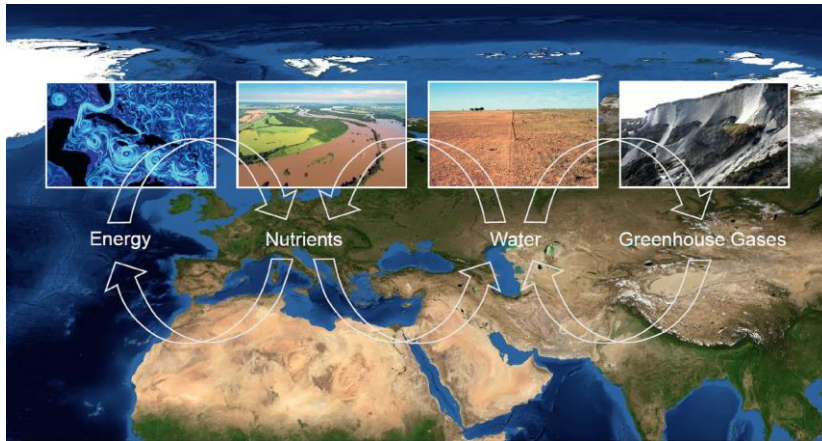


- Our Mobile Dome

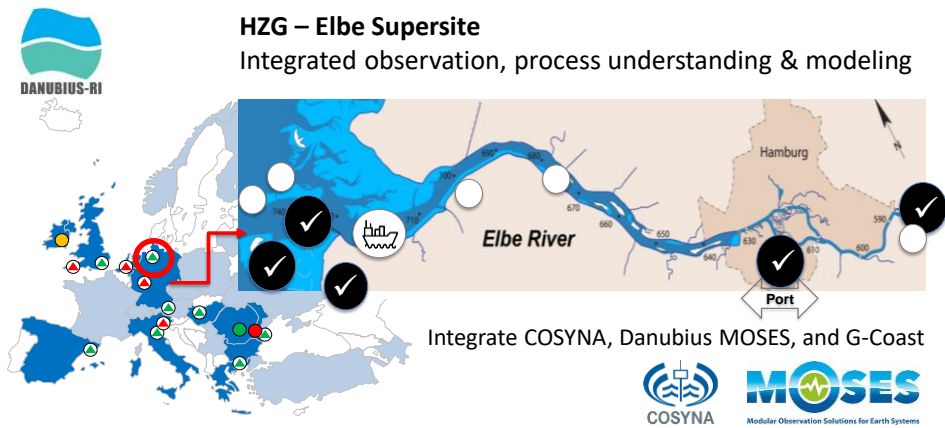


2

Event Chain: - Ocean eddies (lead RU3)  
- Hydrological extremes (Elbe river; RU2, RU3)



Land-Sea Transition Zones



→ Future focus area of Helmholtz Research Field *Earth and Environment*:  
*Coastal Transition Zones under Natural and Human Pressure*